


Reference:	TB069	Sentek Technical Brief	
Document Name:	TB069-Pconfig USB cable driver installation instructions.doc		
Revision:	1.1	Revision Date: September 16, 2009	

PConfig USB cable driver installation instructions

The information in this Technical Brief applies to:

- Probe Programming Cable, PConfig, USB
- Probe Programming Cable, PConfig, USB Driver CD

INTRODUCTION

The Probe Configuration Utility (PConfig), Probe Programming USB Cable (USB Cable) used for communicating to Sentek EnviroSMART probes needs to have the drivers installed on the computer it will be used with before it can work.

Therefore each new computer that the USB Cable is used on will need drivers installed on it.

You can either get the drivers from the Sentek 'Probe Programming Cable, PConfig, USB Driver CD' (Drivers CD) or download the drivers that match your operating system (i.e. one download is for Windows XP, Vista etc and one is for Windows 98 etc) from the Sentek website.

Drivers might occasionally be updated by the manufacturer. The most current drivers will be kept on the *Downloads* page at sentek.com.au.

Note: Ensure you log on with full administrator user rights on the computer before you begin the installation process.

Note: Windows NT4 is not supported.

WINDOWS SERVER 2000, XP, SERVER 2003, VISTA & SERVER 2008

Installing drivers

Note: DO NOT plug the USB Cable in to the computer before or during installation of drivers.

1.
 - a) Downloaded the drivers from www.sentek.com.au/downloads/downloads.asp and extract them from the .zip file **or**
 - b) insert the Drivers CD containing the drivers into the CD drive.
2. Locate the **CDM X.XX.X.exe** file (where you downloaded, then extracted it to, or on the Drivers CD), click on it once and then press **Enter** on the key board.
3. A command window will appear (similar to Figure 1) and the drivers will install automatically. The window will close automatically when the installation is finished.

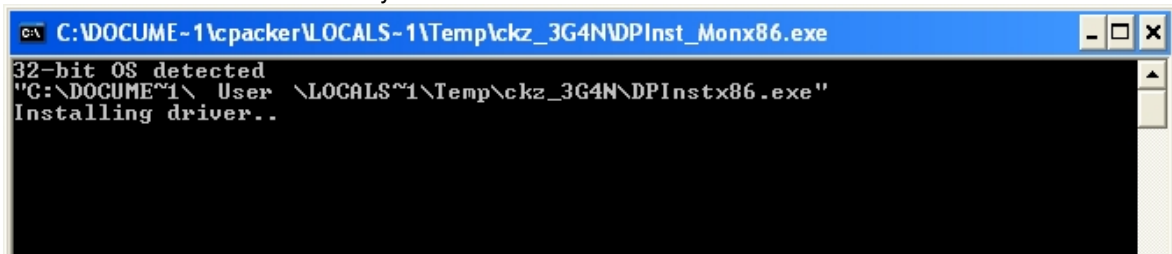



Figure 1: Driver installation screen

4. Plug the USB cable into a free computer USB port
5. Check in *Device Manager* to see the device is recognized (See: 'Verifying drivers are installed' below').

VERIFYING DRIVERS ARE INSTALLED

Windows Vista & Server 2008

To check which Port has been assigned to the cable, open *Device Manager* and look for the interface. Open *Device Manager* by clicking the **Start** button , clicking **Control Panel**, clicking **System and Maintenance** or by opening **System** (depending on whether you are using Classic or Category View), and then clicking **Device Manager**. Double-click to expand *Ports (COM & LPT)* and the USB Cable should show up as *USB Serial Port* followed by the port number in brackets as shown in Figure 2.

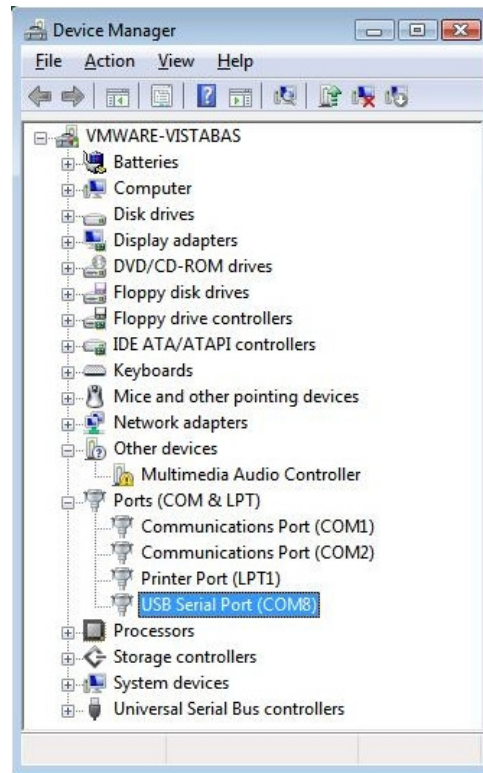


Figure 2: Device Manager

Windows XP & Server 2003

To check which Port has been assigned to the cable, plug the cable in, go into *Device Manager* and look for the interface. Right-click **My Computer**, click **Manage**, and then click **Device Manager**. The *Device Manager* opens as shown in Figure 3 below.

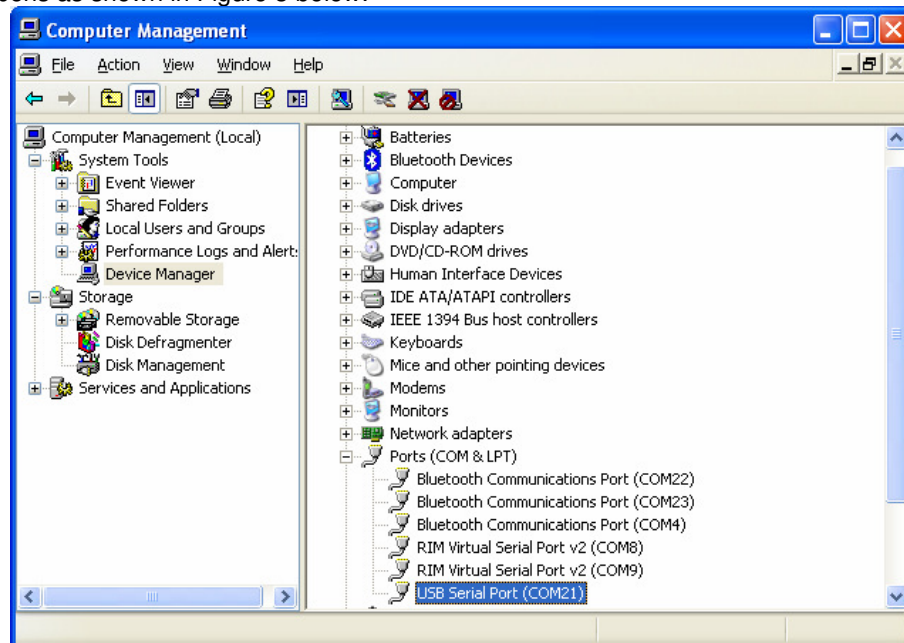



Figure 3: Windows XP Device Manager

Reference:	TB069	Sentek Technical Brief	
Document Name:	TB069-Pconfig USB cable driver installation instructions.doc		
Revision:	1.1	Revision Date: September 16, 2009	

Now double-click to expand the **Ports (COM & LPT)** option and the USB Cable should appear underneath as a *USB Serial Port* followed by the port number in brackets.

WINDOWS 98 & ME

1.
 - a) Make sure that you have downloaded the drivers from www.sentek.com/downloads and extracted them from the .zip file **or**
 - b) you have the Drivers CD inserted into the CD drive.
2. Insert your USB Cable into a USB port on your PC. The *Add New Hardware Wizard* should appear.
3. In the *Add New Hardware Wizard* window, click **Next >**.
4. In the next *Add New Hardware Wizard* screen select **Search for the best driver for your device (Recommended)**, then click **Next >**.
5. In the next *Add New Hardware Wizard* screen select specify location only. Use the **Browse** button to find the **R10906** folder (on the Drivers CD or where you downloaded, then extracted it to), select it and click **OK**.
6. You should automatically return to the *Add New Hardware Wizard* screen and the specified location will be filled in for you. Click **Next >**.
7. After a few moments you should see a screen that says that *Windows is now ready to install the driver for this device*. Click **Next >**.
8. The driver will install and a screen will appear saying that the installation process is complete. Click **Finish**.

USING THE CABLE

The port number that is seen in Device Manager (see 'Verifying drivers are installed') is the number you must select in Probe Configuration Utility software (See Figure 4).

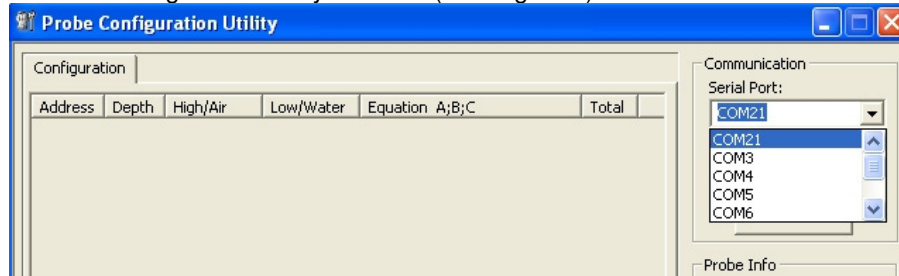


Figure 4: Probe Configuration Utility

Note: The Serial Port number may change if the PConfig cable is inserted into a different USB port on the PC. The drivers do not need to be installed again.

TROUBLESHOOTING

If you experience any problems installing the drivers for the USB Cable, please:

contact your Sentek distributor – www.sentek.com.au/dist/distributors.asp

or

check the Sentek Frequently asked questions page - <http://www.sentek.com.au/support/faq.asp#4>